

Logan Ag News

December 2016

Diplodia Ear Rot Major Concern In 2016 Corn

Diplodia ear rot, a fungal disease of corn caused by *Stenocarpella maydis*, proved costly for many corn growers in 2016. Some of the factors listed below are conditions deemed favorable for development of Diplodia.

- Early season dry conditions followed by warm and wet weather during first 3 weeks following silking
- Continuous corn
- Heavy stalk residue from previous crop on soil surface (no-till or minimum till)
- Upright ears with tight husks

In-season management of Diplodia is difficult, but limiting stress factors on the crop through application of fungicides may be beneficial.

Management decisions to alleviate issues with Diplodia in 2017 should be made now. If planting corn in 2017 in fields where the disease was present during the past growing season, it is highly recommended that tillage occur to bury as much corn residue as possible. Infection into plants is highly dependent upon the quantity of stalks, cobs, and kernels on the soil surface. Review your hybrid selection to plant corn with a higher level of disease



continued on page 2

Logan Ag Begins 55th Year

In December 1962, James Logan (1925-2013) began operations as a commissioned agent for Standard Oil Company, serving farms and businesses in northern Pike County, IL with petroleum products including gasoline, diesel fuel, home heating oil, and lubricants. Jim's business philosophy was simple – *provide quality products at competitive prices with service exceeding customer expectations.*

Logan expanded his business into crop protection chemical sales and application in the mid-1960's, and entered the fertilizer business in the early 1970's. With wife Betty overseeing the bookkeeping from an office in their home (and still in the company office each morning!), the company was blessed with loyal customers who recognized Jim's work ethic, and his commitment to getting the job done correctly.

Current company president Edward Logan joined the family business full-time in 1978, and aided the company's expansion. In 1982, Logan Ag purchased the business of a competing agricultural retailer in Griggsville and retained much of the customer base. Outgrowing its existing capacity, the company constructed a fertilizer, crop protection chemical, and petroleum facility at the present location on IL Route 107 south of Griggsville. Today the location, with more than one acre of environmentally-safe storage under roof, serves as Logan Ag's hub of application and distribution operations. Working through a network of sales associates in Missouri, Illinois, Indiana, and Michigan, Logan Ag supplies crop protection chemicals, seed, and fertilizer throughout the Midwest. Satellite anhydrous ammonia facilities are located near Perry, IL and Winchester, IL. Additionally, the company operates crop protection chemical warehouses in Paris, MO and Pittsburg, OH. The petroleum transportation division provides delivery of gas and diesel products from fuel terminals in Illinois, Missouri, and Iowa to nearly 40 convenience store locations in Illinois and Missouri.

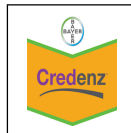
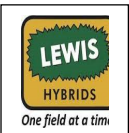
Logan Ag's greatest asset is its group of 35 dedicated professionals who work diligently to perform duties to serve our customers. Thanks to all our customers for helping us achieve this milestone! Our work and livelihood is focused around you!

continued on page 3

LOCATIONS

- * Griggsville, IL 217-833-2375; 1-800-LOGAN AG
- * Pittsburg, OH 937-692-5181 (JACK BAKER)
- * Paris, MO 660-327-1111 (DEAN OSBORN, HEIDI MARTIN, MEGAN MORGAN)

www.LOGANAG.com



continued from page 1

resistance. If you are not locked into corn production, rotate to soybeans at least for a year (two years in soybeans is preferred) to reduce the inoculum present in the field.

Your Logan Ag crop specialist can assist you in management strategies for 2017.

Diesel Fuel Management In Cold Winter Months

The month of December usually brings the first wave of cold weather to the Midwest. Don't allow cold weather conditions to stop your diesel engines! Logan Ag has a lineup of specially formulated winter additives to help keep diesel-powered farm equipment and trucks operating throughout the winter months even when using biodiesel blends.

Let's review some standard terminology when referring to diesel fuel.

CLOUD POINT: This refers to the temperature when wax precipitates out of #2 diesel fuel in the form of small wax crystals. Depending on the refinery where diesel is produced, diesel varies in cloud point temperature by 10° or more. B11 biodiesel blends can raise the cloud point by 10°.

OPERABILITY TEMPERATURE: This refers to the lowest fuel temperature where equipment is still operating properly without power loss or filter plugging.

Today's ULSD (Ultra Low Sulfur Diesel) has significantly reduced sulfur content and also reduced aromatic levels. Aromatics in diesel act as a solvent, and help to keep wax molecules in suspension. When wax molecules interlock, the fuel crystals drop to the bottom of the fuel tank (storage tank or vehicle tank). Often, engines will start and idle at low RPM's. Under acceleration, the engine pulls heavy concentrations of wax from the bottom of the tank and begins to plug the filter.

Many farmers and truckers recall when fuel suppliers blended #1 fuel with #2 fuel to reduce the cloud point and lower the operability temperature. This practice of blending #1 fuel reduced the cloud point by 2-3° for every 10% blended. Blending also lowered the operability temperature by 4-5° for each 10% blended. In effect, blending 30% #1 fuel with 70% #2 fuel could reduce the cloud point by 6° to 9° and lower the operability temperature by 12° to 15°. However, the blend also greatly increased fuel consumption and resulted in power loss. And unfortunately, most fuel terminals no longer supply #1 diesel fuel.

Quality winter fuel additives can effectively lower the operability temperature of #2 diesel fuel by as much as 12° to 16° at standard rates (similar to 30% blend of #1 fuel). Logan Ag often doubles winter additive rates to

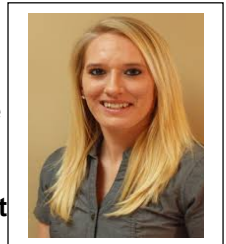
reduce operability temperature further in sub-zero conditions. Additives do not reduce the cloud point, and do not impact fuel economy or decrease power.

Logan Ag makes every attempt to maintain supply of #1 fuel for highway and off-road use. However, we feel winter additives provide equal or better cold weather operability, often at a reduced price. Call Petroleum Specialist Mike Sargent or Petroleum Sales Manager Jordon Schaver for more information. If you experience gelled fuel, pick up some **SOS** additive to solve your fuel emergency. Carry a quart in your truck or tractor to de-ice fuel filters and re-liquefy gelled fuel.

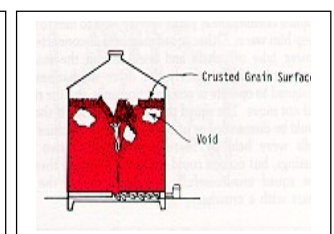
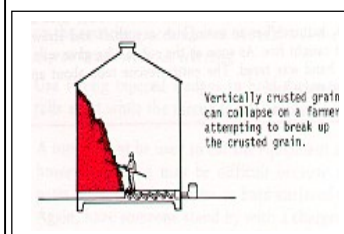
Grain Bin Safety

Heidi Martin, Sales Agronomist – Paris, MO

As grain transfer capability into and out of bins increases, so does the danger associated with it. Listed below are guidelines to follow before and while being in the bin.



- Lockout the unloading equipment and/or control circuit** before entering the bin to reduce the risk of someone turning on equipment while you are in the bin.
- Keep children away from bins, out of wagons, and away from augers.** Grain flow can quickly cover children.
- Never enter a bin with flowing grain.** Flowing grain can pull or cover you rapidly and cause suffocation – the most common cause of grain bin related deaths.
- Attempt to break crusts with a pole before entering the bin.** Bins that have had grain taken out of them and have crusting may have voids below the surface. These voids may collapse, allowing you to fall through the surface layer and become trapped. Breaking vertical crusting can also prove dangerous if standing in the bin.



- Wear a safety harness secured with a line.**
- Do not enter bins alone.** It is helpful to have two additional people stay outside the bin while one person enters in case of emergency. The workers outside the bin should be aware of the proper procedure to extract an entrapped person held by a harness, as well as other extraction protocols.
- Use respiratory equipment and open manholes and doors** to increase air flow. This will help increase oxygen in the bin, and help reduce the direct exposure to mold and dust.

-If trapped in a bin of flowing grain with nothing to hold onto but still able to walk, keep walking and stay near the walls until you can get to a ladder or the grain stops flowing. If you begin to be submerged, cup your hands around your mouth and take short breaths.

-If a person is submerged in grain, begin rescue immediately. No one else should enter the bin. Turn on the fan to move air into the bin, and cut large holes around the bin (about 5' up from the base) to begin to empty the grain. Be careful to not cut too many holes so the grain bin does not collapse. To cut holes, use a front-end tractor loader, an abrasive saw, or an air chisel. Avoid a cutting torch if possible to reduce the risk of fire or explosion from grain dust.

Final Comments

Edward Logan, Logan Ag President

The Paris warehouse has a new office phone and voicemail system. Place this number into your phone's speed dial: [660-327-1111](tel:660-327-1111).

I had the opportunity to speak to the Environmental Sciences class from Griggsville-Perry High School in our conference room recently. We reviewed a soil test and used the test data to calculate lime, phosphorus, and potassium fertility programs, and had an interesting discussion about GMO's. I was impressed with their willingness to learn, and the overall capability of the class in tackling and grasping some very difficult topics. Hats off to Mrs. Sheehan from GPHS for bringing the group to Logan Ag, and for her work with our students!

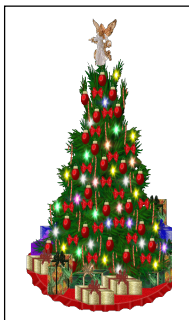
Prepay prices for 2017 crop protection chemicals will be available in early December. Many manufacturers offer financing programs enabling you to take advantage of pre-season pricing. See or call a Logan Ag crop specialist, and review your weed/insect/disease control options for 2017.

We have a 36'x210' lean-to storage building under construction in Griggsville. This additional warehouse is diked for product containment, and insulated to store products above freezing. Packaged crop protection chemicals will be stored in this area upon completion in December. Moss Construction of rural Baylis, IL is the general contractor, and B-K Electric of Griggsville handles the wiring and installation of lighting fixtures.

Mandy Bonds of our Griggsville office staff is on maternity leave for the next several weeks. A longtime member of the Logan Ag family, Becky Birch, will sub in our office during Mandy's absence.

Consider Logan Ag for motor oil and lubrication products including 15w40 engine oil and premium hy/tran fluid. We supply both these products, as well as DEF in bulk. Top quality grease complements our lineup. You'll like our competitive prices!

Merry Christmas!



In-Crop Dicamba Application Approved By EPA

A low-volatility dicamba herbicide manufactured by Monsanto - XtendiMax™ with VaporGrip™ Technology – was approved by EPA for in-crop use on Roundup Ready 2 Xtend® soybeans recently. This registration adds another tool in the weed control tool box for growers fighting glyphosate, PPO, and ALS resistant weed species in soybeans. Sales of Roundup Ready 2 Xtend soybeans are brisk for the 2017 season, and Monsanto projects more than 15 million acres to be planted across the U.S.

Similar dicamba-based products for in-crop application from other manufacturers await approval. **The new compounds such as XtendiMax reduce, but do not eliminate, the possibility of vapor drift to susceptible crops.** Off-label application of dicamba products to Roundup Ready 2 Xtend soybeans during the 2016 cropping season resulted in major damage to orchards and susceptible crops. Farmers feuded among themselves over crop damage, with one such disagreement resulting in murder. Federal agents are investigating off-label applications.

At this writing, we await full product label information to determine application guidelines including the need for field borders in certain situations. Your Logan Ag crop specialist will have full details soon.

Even with the availability of dicamba products to control weed escapes in-crop, the best soybean herbicide programs rely on full rate residual herbicides applied pre-emergence and early post-emergence to prevent weeds from coming up.

Christmastime Laugh

When four of Santa's elves got sick and the trainee elves did not produce toys quickly, Santa felt pressure of being behind schedule. Then Mrs. Claus told Santa that her Mom was coming to visit, causing Santa more stress. When Santa went out to harness the reindeer, two had jumped the fence and were not to be found.

Upon loading the sleigh, one of the boards broke and the toy bag fell to the ground with toys scattered everywhere. Frustrated, Santa went to the house for a cup of cider with a shot of rum, only to find that the elves had been into the rum. In his frustration, he accidentally dropped the pot of cider, and it broke into hundreds of pieces on the floor. When he located the broom to clean it up, mice had chewed off the straw end of the broom. Just at that moment the doorbell rang, and a very irritable Santa went to the door. At the door was a little Angel with a great big Christmas tree. Cheerfully, the Angel said, "Merry Christmas, Santa! What a lovely day this is! Where would you like me to stick this beautiful tree?" And so began the tradition of the little Angel on top of the Christmas tree.

